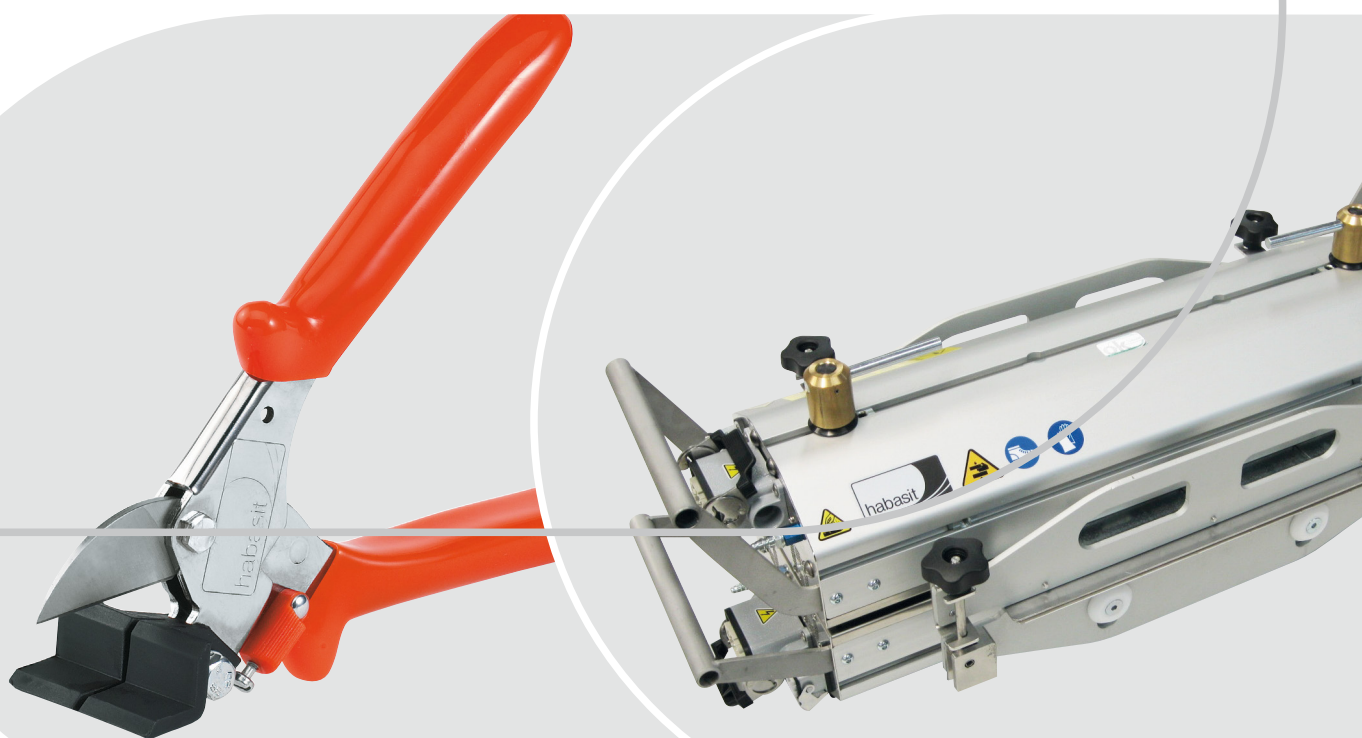


# Habasit Fabrication Tools and Hot Presses



---

Introduction	3
Joining methods	4
Cutting devices	5
Skiving devices	6
Die-cutting devices	7
Quickmelt joining devices	8
Flexproof joining devices	9
Thermofix joining devices	10
Thermofix joining devices	11
Hot-pressing devices	12
Hot-pressing devices – Press series	13
Hot-pressing devices – Control units	14
Hot-pressing devices – Details	15
Guide rails	19
Joining plates for timing belts	20
Solutions in motion	22
Contacts	24

---

---

Effective and efficient fabrication of belts on site is made possible with the broad range of Habasit tools. The available equipment series cover the requirements of standard or specialized in-house fabrication, as well as on-site installations of belts and tapes.

The range includes:

- Cutters and slitters for length and width
- Die-cutter and skiving devices for belt end preparation
- Hot-pressing devices for the joining process
- Welders and welding machines for belts, profiles, etc.
- Accessories such as coiling devices, regulating units, guide rails, etc.

Habasit belts are joined using three different standard techniques, each providing different features and advantages, based on the application and the product type to be joined.

**Thermofix** is a method, suitable for most Habasit products, which only requires simple tools. It can withstand working temperatures up to 100 °C.

**Flexproof** reduces joints' longitudinal stiffness. Thanks to its finger-shaped ends, it provides the maximum contact surface.

**Quickmelt** is the easiest and fastest joining technique, mostly used on monolithic belts. It consists of cutting and hot-pressing the belt ends, providing flexible joining areas and a perfect visual result.

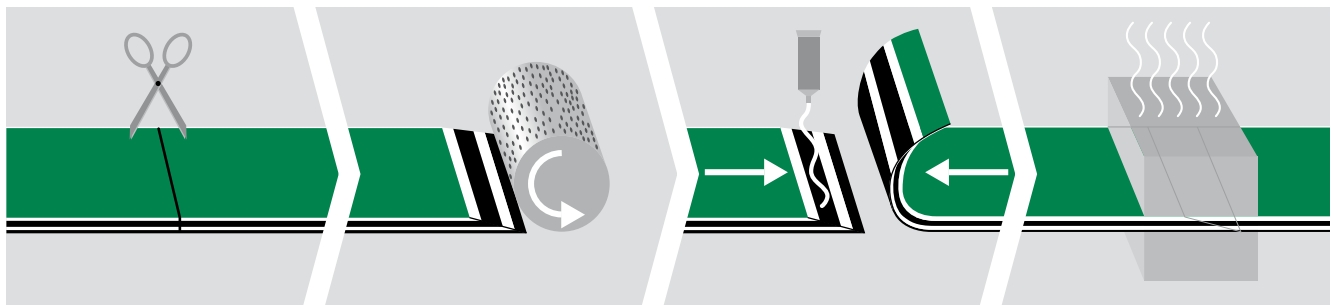
## Thermofix

Cut to size

Skive

Apply adhesive

Hot-pressing



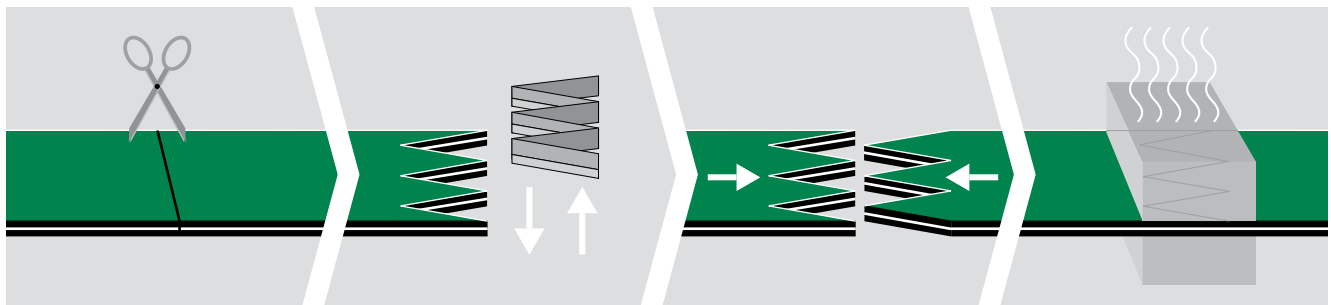
## Flexproof

Cut to size

Die-cut / finger-cut

Join

Hot-press

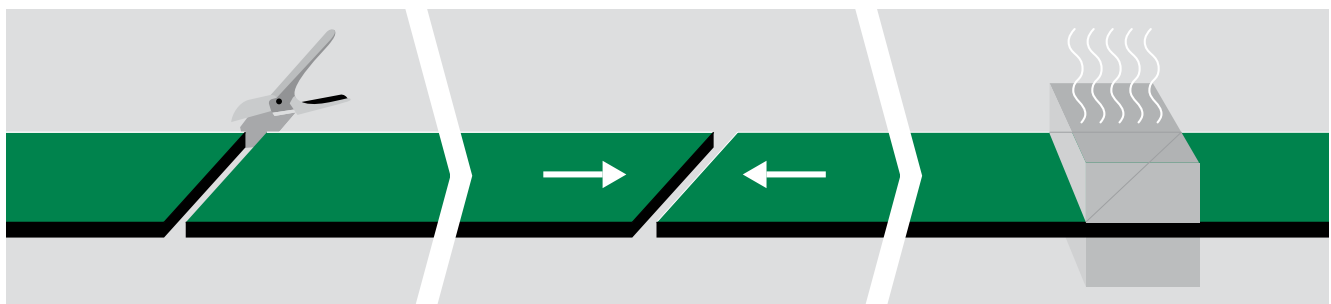


## Quickmelt

Cut to size and angle

Join

Hot-press



## S-16

Manual scissors for cutting round belts, up to 15 mm in diameter. Ideal for Polycord, Habicord, and small section extruded profiles.



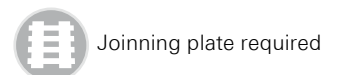
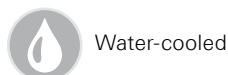
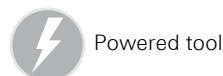
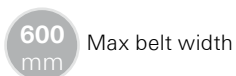
## AQ-40

Manual scissors for cutting flat belts, up to 40 mm wide and 3 mm thick. Marks on the cutting bed allow angled cuts. Designed for machine tapes, requiring Quickmelt joining.



Details				Power supply					Product type					Method			Dimensions						
Product name	Max. belt width	Ordering code	Article name	Power [W]	Manual	1 x 120 V	1 x 230 V	3 x 230 V	3 x 400 V	Timing belts	Conveyor belts	Habasit Cleandrive™	Round belts	Power transmission	Machine tapes	Joining plate required	Flexproof	Quickmelt	Thermofix	Length [mm]	Width [mm]	Height [mm]	Weight [kg]
S-16	15	H080690010	S-16/0		•								•				•			165	40	45	1
AQ-40	40	H080690020	AQ-40/0		•					•	•			•	•		•			220	80	55	1

### Key to symbols



## AT-60

Manual grinding disc skiving tool for belts requiring Thermofix joining, up to 60 mm wide and 2 mm thick. This tool is designed for occasional preparation of single power transmission belts and spindle tapes.



## AT-200

Grinding roller skiving tool for belts requiring Thermofix joining, up to 200 mm wide and 7 mm thick. The tool is available in two versions: with and without power drive, which consists of a high-torque power drill.



## A-600

Belt sander skiving tool for belts requiring Thermofix joining, up to 600 mm wide and 6 mm thick. Wider belts can also be processed in multiple steps.



Details				Power supply					Product type						Method			Dimensions					
Product name	Max. belt width	Ordering code	Article name	Power [W]	Manual	1 x 120 V	1 x 230 V	3 x 230 V	3 x 400 V	Timing belts	Conveyor belts	Habasit Cleandrive™	Round belts	Power transmission	Machine tapes	Joining plate required	Flexproof	Quickmelt	Thermofix	Length [mm]	Width [mm]	Height [mm]	Weight [kg]
AT-60	60	H080690050	AT-60/0		●						●			●	●			●	220	190	85	2	
AT-200	200	H080690190	AT-200/8	550			●				●			●	●			●	385	405	185	12	
AT-200	200	H080690160	AT-200/0			○	○				●			●	●			●	385	405	185	10	
A-600	600	H080690360	A-600/8	750			●				●				●			●	875	445	255	32	
A-600	600	H080690350	A-600/6	750		●					●				●			●	875	445	255	32	

● Recommended ○ Possible

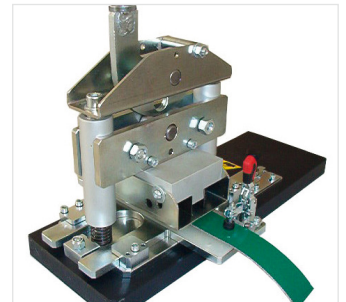
## A-2410

Manual kit for die-cutting of Flexproof geometries on thermoplastic belts up to 5 mm thick. A zig-zag pattern tape guides the operator to ensure proper preparation. This is the simplest tool for on-site preparation of conveyor belts.



## AF-42

Manual tool for die-cutting of 10x120 Flexproof geometry on thermoplastic belts up to 40 mm wide. Designed for preparing tangential power transmission belts preparation.



## AF-102

Manual scissor tool for preparation of 8x30 Flexproof geometry on thermoplastic belts up to 100 mm wide and 2 mm thick. Ideal for machine tapes and spindle tapes.



Details				Power supply					Product type					Method			Dimensions							
Product name	Max. belt width	Ordering code	Article name	Power [W]	Manual	1 x 120 V	1 x 230 V	3 x 230 V	3 x 400 V	Timing belts	Conveyor belts	Habasit Cleandrive™	Round belts	Power transmission	Machine tapes	Joining plate required	Flexproof	Quickmelt	Thermofix	Length [mm]	Width [mm]	Height [mm]	Weight [kg]	
A-2410		S080690390	A-2410/0		●						●			●			●							1
AF-42	40	H088000149	AF-42/0		●						○			●			●			445	230	260		8
AF-102	100	H080690060	AF-102/0		●										●		●			200	52	85		2

● Recommended    ○ Possible

## PQ-01

Quickmelt welding tool, designed for joining round belts. It consists of a W-01 welder and CQ-01 table stand for belt ends positioning.



## PQ-02

Quickmelt welding tool, designed for joining round belts. It consists of a W-01 welder and CQ-02 clamping device.



## W-01

The W-01 heating welder has been specifically designed for rapid and safe welding of thermoplastic round belts up to a diameter of 15 mm.



## PQ-59

Hot-pressing device for joining of thermoplastic belts up to 50 mm wide and 3.6 mm thick. For maximum flexibility, the working temperature can be set via a trimmer control. Specifically designed for machine tapes and spindle tapes.



Details				Power supply				Product type						Method			Dimensions						
Product name	Max. belt width	Ordering code	Article name	Power [W]	Manual	1 x 120 V	1 x 230 V	3 x 230 V	3 x 400 V	Timing belts	Conveyor belts	Habasit Cleandrive™	Round belts	Power transmission	Machine tapes	Joining plate required	Flexproof	Quickmelt	Thermofix	Length [mm]	Width [mm]	Height [mm]	Weight [kg]
PQ-01	15	H088000526	PQ-01/8	80			●						●				●			420	140	120	1
PQ-01	15	H088000525	PQ-01/6	80		●							●				●			420	140	120	1
PQ-02	15	H088000541	PQ-02/8	80			●						●				●			420	140	120	1
PQ-02	15	H088000540	PQ-02/6	80		●							●				●			420	140	120	1
W-01	15	H08N060965	W-01/8	80			●						●				●			250	50	50	1
W-01	15	H088000540	W-01/6	80		●							●				●			250	50	50	1
PQ-59	50	H088000231	PQ-59/8	450			●			○				●	●	○	●			280	70	95	1
PQ-59	50	H088000230	PQ-59/6	450		●				○				●	●	○	●			280	70	95	1

● Recommended    ○ Possible



## PF-62

Hot-pressing device for Flexproof joining of thermoplastic belts up to 60 mm wide and 5 mm thick. Designed for tangential power transmission belts.



## PF-100S

Hot-pressing device for Flexproof joining of thermoplastic belts up to 100 mm wide and 2.5 mm thick.



## PF-101

Hot-pressing device for Flexproof and Thermofix joining of thermoplastic belts up to 100 mm wide and 6 mm thick. The external control unit provides full management of the joining cycle parameters (temperature and time) and the cooling fan system.



## PF-151TB

Hot-pressing device for joining timing belts up to 152.4 mm wide. The external control unit provides full management of the joining cycle parameters (temperature and time) and the cooling fan system.



Details				Power supply					Product type						Method			Dimensions					
Product name	Max. belt width	Ordering code	Article name	Power [W]	Manual	1 x 120 V	1 x 230 V	3 x 230 V	3 x 400 V	Timing belts	Conveyor belts	Habasit Cleandrive™	Round belts	Power transmission	Machine tapes	Joining plate required	Flexproof	Quickmelt	Thermofix	Length [mm]	Width [mm]	Height [mm]	Weight [kg]
PF-62	60	H088000410	PF-62/8	500			●				●			●	●	●	●			320	176	116	2
PF-62	60	H088000409	PF-62/6	500		●					●			●	●	●	●			320	176	116	2
PF-100S	100	H080690230	PF-100S/8	150			●				●			○	○	●	●			285	102	102	2
PF-100S	100	H080690210	PF-100S/6	150		●					●			○	○	●	●			285	102	102	2
PF-101	100	H080690410	PF-101/8	700			●				●			●	○		●		●	260	190	145	4
PF-101	100	H080690400	PF-101/6	700		●					●			●	○		●		●	260	190	145	4
PF-151TB	152,4	H088000440	PF-151TB/8	2000			●			●						●	●			280	240	110	8
PF-151TB	152,4	H088000439	PF-151TB/6	2000		●				●						●	●			280	240	110	8

● Recommended    ○ Possible

## PT-50

Hot-pressing device for Thermofix joining of belts up to 50 mm wide and 2 mm thick. It is especially suitable for offline joining of spindle tapes and machine tapes.

50  
mm



## PT-55

Hot-pressing device for Thermofix joining of belts up to 50 mm wide and 2.5 mm thick. Thanks to the portable body, it is especially suitable for joining spindle tapes and machine tapes directly on-site.

50  
mm



## PT-100

Hot-pressing device for Thermofix offline joining of belts up to 100 mm wide and 6 mm thick.

100  
mm



## PT-103

Hot-pressing device for Thermofix joining of belts up to 100 mm wide and 2.5 mm thick. Thanks to the portable body, it is especially suitable for joining power transmission belts directly on-site.

100  
mm



## PT-103S

Hot-pressing device for Thermofix joining of belts up to 100 mm wide and 2.5 mm thick. Thanks to the portable body, it is especially suitable for joining of power transmission belts directly on-site. The integrated guide rail permits an easy positioning of belt ends.

100  
mm



## PT-300

Hot-pressing device for Thermofix joining of belts up to 300 mm wide and 8 mm thick. The integrated belt clamps permit an easy positioning of belt ends.

300  
mm



## PT-600

Hot-pressing device for Thermofix joining of belts up to 600 mm wide and 8 mm thick. The integrated belt clamps permit easy positioning of belt ends. The compact design allows easy access even in tight spaces.

600  
mm



Details				Power supply					Product type						Method			Dimensions					
Product name	Max. belt width	Ordering code	Article name	Power [W]	Manual	1 x 120 V	1 x 230 V	3 x 230 V	3 x 400 V	Timing belts	Conveyor belts	Habasit Cleandrive™	Round belts	Power transmission	Machine tapes	Joining plate required	Flexproof	Quickmelt	Thermofix	Length [mm]	Width [mm]	Height [mm]	Weight [kg]
PT-50	50	H080691450	PT-50/8	75			●				○				●			●	215	120	84	1	
PT-50	50	H080691430	PT-50/6	75		●					○				●			●	215	120	84	1	
PT-55	50	H080691420	PT-55/8	150			●				○				●			●	280	63	95	1	
PT-55	50	H080691400	PT-55/6	150		●					○				●			●	280	63	95	1	
PT-100	100	H080690090	PT-100/8	150			●				○			○	●			●	285	128	102	2	
PT-100	100	H080690070	PT-100/6	150		●					○			○	●			●	285	128	102	2	
PT-103	100	H080690120	PT-103/8	150			●				○			○	●			●	289	96	56	1	
PT-103	100	H080690100	PT-103/6	150		●					○			○	●			●	289	96	56	1	
PT-103S	100	H080690150	PT-103S/8	150			●				○			○	●			●	300	250	56	1	
PT-103S	100	H080690130	PT-103S/6	150		●					○			○	●			●	300	250	56	1	
PT-300	300	H080690310	PT-300/8	800			●				●			●	○			●	420	175	200	12	
PT-300	300	H080690290	PT-300/6	800		●					●			●	○			●	420	175	200	12	
PT-600	600	H080690340	PT-600/8	150			●				●			●	○			●	750	160	167	18	
PT-600	600	H080690320	PT-600/6	150		●					●			●	○			●	750	160	168	18	

● Recommended    ○ Possible

The kits provided to join Habasit fabric and monolithic belts consistently deliver outstanding joining quality, high reliability and flexibility.

Ease of use is guaranteed by Habasit control units and a constantly updated database of joining parameters, validated by our engineers on Habasit products.

Five different press series are available, to satisfy different needs, such as processable product ranges and joining technologies (Flexproof, Quickmelt and Thermofix).

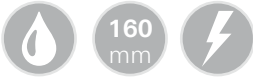
Each series comprises several press body lengths. They are available as mobile or stationary kits, which normally includes a press body, control unit and accessories.



Choose your range																								
Widths [mm]	150	300	400	600	800	1000	1200	1300	1600	1800	2000	2200	2400	2600	2800	300	3200	3400	3600	3800	4000	4200		
PO-03 Habasit Cleandrive™			•	•				•		•														☼
PM-09A Multipurpose		•		•		•		•	•		•													☼
PM-09W Multipurpose		•		•	•	•	•		•		•													☼
PM-HD High duty belts							•					•												☼
PM-04 Extra large													•					•		•				☼

## PM-09W

The PM-09W is a lightweight hot-pressing series designed for joining conveyor belts up to 10 mm thick. Thanks to a 160 mm wide heat equalization plate the press can also be used for 10/120 Flexproof geometry and step-flex (finger over finger) joining.



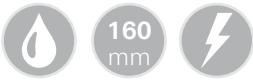
## PM-HD

The PM-HD is a heavy duty hot-pressing series designed for joining heavy duty belts up to 12 mm thick. Thanks to a 200 mm wide equalization plate the press can also be used for step-joining of marble belts.



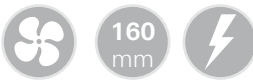
## PM-04

The PM-04 is a range of hot-pressing devices, designed for wide belts up to 4200 mm wide and 10 mm thick. Thanks to a 160 mm wide heat equalization plate the press can be used also for 10/120 Flexproof geometry and step-flex (finger over finger) joining.



## PM-09A

The PM-09A is a lightweight and air-cooled hot-pressing series designed for joining conveyor belts up to 10 mm thick. Thanks to a 160 mm wide heat equalization plate the press can also be used for 10/120 Flexproof geometry and step-flex (finger over finger) joining.









## PQ-03

The PQ-03 heat press series has been specifically developed for joining Habasit Cleandrive™ series belts up to 10 mm thick using the Quickmelt method. The press is compact, lightweight and easy to use. It does not need water for cooling and there are no exposed hot parts.



Habasit customized hot-pressing control units are compact and easy to handle. Three different control unit models are available: Pro, Lite, and (only for the PQ-03) Portable. The PMR enables control of all phases of a belt joining cycle, including the water cooling and the subsequent water drain by compressed air. Thanks to multiple connections on the back panel it allows two modes of usage: stationary, together with a fixed cooling unit, or mobile, with a mobile cooling unit and mini-compressor.

	PMR-06	PMR-07	PFR-101 (for PQ-03 only)
			
			
Model	Pro	Lite	Portable
Temperature regulation	Yes Both plates Individual control	Yes Both plates Individual control	Yes Both plates Individual control
Time control	Yes	Yes	Yes
Joining parameters	Yes	No	No
Pressure control (Mobile)	By external compressor	By external compressor	No
Cooling control (Mobile)	Auto (PM-04/8)	Auto (PM-04/8)	Yes
Pressure control (Stationary)	Auto (PMC-06)	Manual (PMC-07)	
Cooling control (Stationary)	Auto (PMC-06)	Auto (PMC-07)	

Details			Power supply				Product type				Method			Dimensions				Press details				
Max belt width	Ordering code	P/N	Power [W]	Voltage				Conveyor belts	Habasit Cleandrive™	Power transmission	Machine tapes	Flexproof	Quickmelt	Thermofix	Length [mm]	Width [mm]	Height [mm]	Weight [kg]	Kit version	Control unit	Cooling unit	Press accessories
				1 x 120 V	1 x 230 V	3 x 230 V	3 x 400 V															
<b>PQ-03 Habasit Cleandrive™</b>																						
400	H088000521	PQ-403/8	1000	•				•			•		670	165	230	15	Mobile	PFR-101				
	H088000520	PQ-403/6	1000	•				•			•		670	165	230	15	Mobile	PFR-101				
600	H088000412	PQ-603/8	1200	•				•			•		900	150	200	19	Mobile	PFR-101				
	H088000411	PQ-603/6	1200	•				•			•		900	150	200	19	Mobile	PFR-101				
1300	H088000457	PQ-1303/8	2900	•				•			•		1690	165	260	62	Mobile	PFR-101				
	H088000456	PQ-1303/6	1600	•				•			•		1690	165	260	62	Mobile	PFR-101				
1800	H088000506	PQ-1803/5	4700				•	•			•		2220	300	320	89	Mobile	PMR-07/5				
	H088000505	PQ-1803/4	3600		•			•			•		2220	300	320	89	Mobile	PMR-07/4				
<b>PM-09A air-cooled, multipurpose</b>																						
300	H088000345	PM-309/160A-M-CXM/4	1400		•		•	•	•	•	•	•	790	315	300	30	Mobile	PMR-07/4		MC-05/8		
	H088000346	PM-309/160A-M-CXM/5	1400			•	•	•	•	•	•	•	790	315	300	30	Mobile	PMR-07/5		MC-05/8		
	H088000347	PM-309/160A-M-CXM/8	1400	•			•	•	•	•	•	•	790	315	300	30	Mobile	PMR-07/8		MC-05/8		
600	H088000350	PM-609/160A-M-CXM/8	2600	•			•	•	•	•	•	•	1080	315	300	44	Mobile	PMR-07/8		MC-05/8		
	H088000348	PM-609/160A-M-CXM/4	2600		•		•	•	•	•	•	•	1080	315	300	44	Mobile	PMR-07/4		MC-05/8		
	H088000349	PM-609/160A-M-CXM/5	2600			•	•	•	•	•	•	•	1080	315	300	44	Mobile	PMR-07/5		MC-05/8		
1000	H088000352	PM-1009/160A-M-CXM/5	4000			•	•	•	•	•	•	•	1490	315	300	60	Mobile	PMR-07/5		MC-05/8		
	H088000351	PM-1009/160A-M-CXM/4	4000		•		•	•	•	•	•	•	1490	315	300	60	Mobile	PMR-07/4		MC-05/8		
1350	H088000311	PM-1359/160A-M-CXM/5	5600			•	•	•	•	•	•	•	1850	300	311	90	Mobile	PMR-07/5		MC-05/8		
	H088000310	PM-1359/160A-M-CXM/4	5600		•		•	•	•	•	•	•	1850	300	311	90	Mobile	PMR-07/4		MC-05/8		
1600	H088000247	PM-1609/160A-M-CXM/4	6400		•		•	•	•	•	•	•	2066	300	311	100	Mobile	PMR-07/4		MC-05/8		
	H088000248	PM-1609/160A-M-CXM/5	6400			•	•	•	•	•	•	•	2066	300	311	100	Mobile	PMR-07/5		MC-05/8		
2000	H088000398	PM-2009/160A-M-CXM/4	7200		•		•	•	•	•	•	•	2490	300	400	162	Mobile	PMR-07/4		MC-05/8		
	H088000399	PM-2009/160A-M-CXM/5	7200			•	•	•	•	•	•	•	2490	300	400	162	Mobile	PMR-07/5		MC-05/8		

Details			Power supply				Product type			Method			Dimensions				Press details					
Max belt width	Ordering code	P/N	Power [W]	Voltage				Conveyor belts	Habasit Cleandrive™	Power transmission	Machine tapes	Flexproof	Quickmelt	Thermofix	Length [mm]	Width [mm]	Height [mm]	Weight [kg]	Kit version	Control unit	Cooling unit	Press accessories
				1 x 120 V	1 x 230 V	3 x 230 V	3 x 400 V															
<b>PM-09W water-cooled, multipurpose</b>																						
300	H088000260	PM-309/160W-S-AAX/5	1120				•	•	•	•	•	•	•	675	380	300	31	Stationary	PMR-06/5	PMC-06		
	H088000264	PM-309/160W-M-APM/8	1120	•				•	•	•	•	•	•	675	380	300	31	Mobile	PMR-06/8	PM-04/8	MC-05/8	
	H088000263	PM-309/160W-M-APM/5	1120				•	•	•	•	•	•	•	675	380	300	31	Mobile	PMR-06/5	PM-04/8	MC-05/8	
	H088000261	PM-309/160W-S-AAX/8	1120	•				•	•	•	•	•	•	675	380	300	31	Stationary	PMR-06/8	PMC-06		
	H088000259	PM-309/160W-S-AAX/4	1120		•			•	•	•	•	•	•	675	380	300	31	Stationary	PMR-06/4	PMC-06		
	H088000258	PM-309/160W-M-CPM/8	1120	•				•	•	•	•	•	•	675	380	300	31	Mobile	PMR-07/8	PM-04/8	MC-05/8	
	H088000257	PM-309/160W-M-CPM/6	1120	•				•	•	•	•	•	•	675	380	300	31	Mobile	PMR-07/6	PM-04/8	MC-05/8	
	H088000256	PM-309/160W-M-CPM/5	1120				•	•	•	•	•	•	•	675	380	300	31	Mobile	PMR-07/5	PM-04/8	MC-05/8	
	H088000251	PM-309/160W-S-CCX/4	1120		•			•	•	•	•	•	•	675	380	300	31	Stationary	PMR-07/4	PMC-07		
	H088000254	PM-309/160W-S-CCX/8	1120	•				•	•	•	•	•	•	675	380	300	31	Stationary	PMR-07/8	PMC-07		
	H088000253	PM-309/160W-S-CCX/6	1120	•				•	•	•	•	•	•	675	380	300	31	Stationary	PMR-07/6	PMC-07		
	H088000252	PM-309/160W-S-CCX/5	1120				•	•	•	•	•	•	•	675	380	300	31	Stationary	PMR-07/5	PMC-07		
	H088000255	PM-309/160W-M-CPM/4	1120		•			•	•	•	•	•	•	675	380	300	31	Mobile	PMR-07/4	PM-04/8	MC-05/8	
H088000262	PM-309/160W-M-APM/4	1120		•			•	•	•	•	•	•	675	380	300	31	Mobile	PMR-06/4	PM-04/8	MC-05/8		
600	H088000274	PM-609/160W-S-AAX/8	2080	•				•	•	•	•	•	•	925	380	300	46	Stationary	PMR-06/8	PMC-06		
	H088000273	PM-609/160W-S-AAX/5	2080				•	•	•	•	•	•	•	925	380	300	46	Stationary	PMR-06/5	PMC-06		
	H088000272	PM-609/160W-S-AAX/4	2080		•			•	•	•	•	•	•	925	380	300	46	Stationary	PMR-06/4	PMC-06		
	H088000271	PM-609/160W-M-CPM/8	2080	•				•	•	•	•	•	•	925	380	300	46	Mobile	PMR-07/8	PM-04/8	MC-05/8	
	H088000270	PM-609/160W-M-CPM/5	2080				•	•	•	•	•	•	•	925	380	300	46	Mobile	PMR-07/5	PM-04/8	MC-05/8	
	H088000269	PM-609/160W-M-CPM/4	2080		•			•	•	•	•	•	•	925	380	300	46	Mobile	PMR-07/4	PM-04/8	MC-05/8	
	H088000268	PM-609/160W-S-CCX/8	2080	•				•	•	•	•	•	•	925	380	300	46	Stationary	PMR-07/8	PMC-07		
	H088000266	PM-609/160W-S-CCX/4	2080		•			•	•	•	•	•	•	925	380	300	46	Stationary	PMR-07/4	PMC-07		
	H088000276	PM-609/160W-M-APM/5	2080				•	•	•	•	•	•	•	925	380	300	46	Mobile	PMR-06/5	PM-04/8	MC-05/8	
	H088000277	PM-609/160W-M-APM/8	2080	•				•	•	•	•	•	•	925	380	300	46	Mobile	PMR-06/8	PM-04/8	MC-05/8	
	H088000267	PM-609/160W-S-CCX/5	2080				•	•	•	•	•	•	•	925	380	300	46	Stationary	PMR-07/5	PMC-07		
H088000275	PM-609/160W-M-APM/4	2080		•			•	•	•	•	•	•	925	380	300	46	Mobile	PMR-06/4	PM-04/8	MC-05/8		
800	H088000289	PM-809/160W-M-APM/5	2880				•	•	•	•	•	•	•	1120	380	300	55	Mobile	PMR-06/5	PM-04/8	MC-05/8	
	H088000290	PM-809/160W-M-APM/8	2880	•				•	•	•	•	•	•	1120	380	300	55	Mobile	PMR-06/8	PM-04/8	MC-05/8	
	H088000280	PM-809/160W-S-CCX/5	2880				•	•	•	•	•	•	•	1120	380	300	55	Stationary	PMR-07/5	PMC-07		
	H088000281	PM-809/160W-S-CCX/8	2880	•				•	•	•	•	•	•	1120	380	300	55	Stationary	PMR-07/8	PMC-07		
	H088000282	PM-809/160W-M-CPM/4	2880		•			•	•	•	•	•	•	1120	380	300	55	Mobile	PMR-07/4	PM-04/8	MC-05/8	
	H088000283	PM-809/160W-M-CPM/5	2880				•	•	•	•	•	•	•	1120	380	300	55	Mobile	PMR-07/5	PM-04/8	MC-05/8	
	H088000284	PM-809/160W-M-CPM/8	2880	•				•	•	•	•	•	•	1120	380	300	55	Mobile	PMR-07/8	PM-04/8	MC-05/8	
	H088000285	PM-809/160W-S-AAX/4	2880		•			•	•	•	•	•	•	1120	380	300	55	Stationary	PMR-06/4	PMC-06		
	H088000286	PM-809/160W-S-AAX/5	2880				•	•	•	•	•	•	•	1120	380	300	55	Stationary	PMR-06/5	PMC-06		
	H088000287	PM-809/160W-S-AAX/8	2880	•				•	•	•	•	•	•	1120	380	300	55	Stationary	PMR-06/8	PMC-06		
	H088000288	PM-809/160W-M-APM/4	2880		•			•	•	•	•	•	•	1120	380	300	55	Mobile	PMR-06/4	PM-04/8	MC-05/8	
	H088000279	PM-809/160W-S-CCX/4	2880		•			•	•	•	•	•	•	1120	380	300	55	Stationary	PMR-07/4	PMC-07		

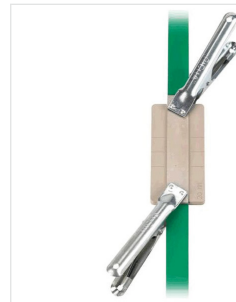


Details			Power supply				Product type				Method			Dimensions				Press details				
Max belt width	Ordering code	P/N	Power [W]	1 x 120 V	1 x 230 V	3 x 230 V	3 x 400 V	Conveyor belts	Habasit Cleandrive™	Power transmission	Machine tapes	Flexproof	Quickmelt	Thermofix	Length [mm]	Width [mm]	Height [mm]	Weight [kg]	Kit version	Control unit	Cooling unit	Press accessories
			<b>PM-09W water-cooled, multipurpose</b>																			
1000	H088000083	PM-1009/160W-M-APM/4	3360			•	•	•	•	•	•	•	•	•	1350	380	300	69	Mobile	PMR-06/4	PM-04/8	MC-05/8
	H088000173	PM-1009/160W-M-CPM/5	3360			•	•	•	•	•	•	•	•	•	1350	380	300	69	Mobile	PMR-07/5	PM-04/8	MC-05/8
	H088000180	PM-1009/160W-S-CCX/5	3360			•	•	•	•	•	•	•	•	•	1350	380	300	69	Stationary	PMR-07/5	PMC-07	
	H088000137	PM-1009/160W-S-AAX/4	3360		•		•	•	•	•	•	•	•	•	1350	380	300	69	Stationary	PMR-06/4	PMC-06	
	H088000112	PM-1009/160W-S-CCX/8	3360	•			•	•	•	•	•	•	•	•	1350	380	300	69	Stationary	PMR-07/8	PMC-07	
	H088000111	PM-1009/160W-S-AAX/5	3360			•	•	•	•	•	•	•	•	•	1350	380	300	69	Stationary	PMR-06/5	PMC-06	
	H088000110	PM-1009/160W-M-CPM/8	3360	•			•	•	•	•	•	•	•	•	1350	380	300	69	Mobile	PMR-07/8	PM-04/8	MC-05/8
	H088000182	PM-1009/160W-S-AAX/8	3360	•			•	•	•	•	•	•	•	•	1350	380	300	69	Stationary	PMR-06/8	PMC-06	
	H088000321	PM-1009/160W-M-CPM/4	3360		•		•	•	•	•	•	•	•	•	1350	380	300	69	Mobile	PMR-07/4	PM-04/8	MC-05/8
	H088000166	PM-1009/160W-M-APM/8	3360	•			•	•	•	•	•	•	•	•	1350	380	300	69	Mobile	PMR-06/8	PM-04/8	MC-05/8
1200	H088000320	PM-1009/160W-S-CCX/4	3360		•		•	•	•	•	•	•	•	•	1350	380	300	69	Stationary	PMR-07/4	PMC-07	
	H088000109	PM-1009/160W-M-APM/5	3360			•	•	•	•	•	•	•	•	•	1350	380	300	69	Mobile	PMR-06/5	PM-04/8	MC-05/8
	H088000187	PM-1209/160W-M-APM/4	4160		•		•	•	•	•	•	•	•	•	1630	400	300	92	Mobile	PMR-06/4	PM-04/8	MC-05/8
	H088000322	PM-1209/160W-M-CPM/4	4160		•		•	•	•	•	•	•	•	•	1630	400	300	92	Mobile	PMR-07/4	PM-04/8	MC-05/8
	H088000233	PM-1209/160W-S-CCX/5	4160			•	•	•	•	•	•	•	•	•	1630	400	300	92	Stationary	PMR-07/5	PMC-07	
	H088000147	PM-1209/160W-M-APM/5	4160			•	•	•	•	•	•	•	•	•	1630	400	300	92	Mobile	PMR-06/5	PM-04/8	MC-05/8
	H088000140	PM-1209/160W-M-CPM/5	4160			•	•	•	•	•	•	•	•	•	1630	400	300	92	Mobile	PMR-07/5	PM-04/8	MC-05/8
	H088000323	PM-1209/160W-S-CCX/4	4160		•		•	•	•	•	•	•	•	•	1630	400	300	92	Stationary	PMR-07/4	PMC-07	
1600	H088000312	PM-1209/160W-S-AAX/5	4160			•	•	•	•	•	•	•	•	•	1630	400	300	92	Stationary	PMR-06/5	PMC-06	
	H088000324	PM-1209/160W-S-AAX/4	4160		•		•	•	•	•	•	•	•	•	1630	400	300	92	Stationary	PMR-06/4	PMC-06	
	H088000360	PM-1609/160W-S-AAX/5	5200			•	•	•	•	•	•	•	•	•	1920	380	400	150	Stationary	PMR-06/5	PMC-06	
	H088000361	PM-1609/160W-M-APM/4	5200		•		•	•	•	•	•	•	•	•	1920	380	400	150	Mobile	PMR-06/4	PM-04/8	MC-05/8
	H088000355	PM-1609/160W-S-CCX/4	5200		•		•	•	•	•	•	•	•	•	1920	380	400	150	Stationary	PMR-07/4	PMC-07	
	H088000356	PM-1609/160W-S-CCX/5	5200			•	•	•	•	•	•	•	•	•	1920	380	400	150	Stationary	PMR-07/5	PMC-07	
	H088000357	PM-1609/160W-M-CPM/4	5200		•		•	•	•	•	•	•	•	•	1920	380	400	150	Mobile	PMR-07/4	PM-04/8	MC-05/8
	H088000358	PM-1609/160W-M-CPM/5	5200			•	•	•	•	•	•	•	•	•	1920	380	400	150	Mobile	PMR-07/5	PM-04/8	MC-05/8
2000	H088000362	PM-1609/160W-M-APM/5	5200			•	•	•	•	•	•	•	•	•	1920	380	400	150	Mobile	PMR-06/5	PM-04/8	MC-05/8
	H088000359	PM-1609/160W-S-AAX/4	5200		•		•	•	•	•	•	•	•	•	1920	380	400	150	Stationary	PMR-06/4	PMC-06	
	H088000371	PM-2009/160W-M-APM/5	6400			•	•	•	•	•	•	•	•	•	2320	380	400	174	Mobile	PMR-06/5	PM-04/8	MC-05/8
	H088000365	PM-2009/160W-S-CCX/5	6400		•		•	•	•	•	•	•	•	•	2320	380	400	174	Stationary	PMR-07/5	PMC-07	
	H088000366	PM-2009/160W-M-CPM/4	6400		•		•	•	•	•	•	•	•	•	2320	380	400	174	Mobile	PMR-07/4	PM-04/8	MC-05/8
	H088000367	PM-2009/160W-M-CPM/5	6400			•	•	•	•	•	•	•	•	•	2320	380	400	174	Mobile	PMR-07/5	PM-04/8	MC-05/8
	H088000368	PM-2009/160W-S-AAX/4	6400		•		•	•	•	•	•	•	•	•	2320	380	400	174	Stationary	PMR-06/4	PMC-06	
	H088000369	PM-2009/160W-S-AAX/5	6400			•	•	•	•	•	•	•	•	•	2320	380	400	174	Stationary	PMR-06/5	PMC-06	
H088000370	PM-2009/160W-M-APM/4	6400		•		•	•	•	•	•	•	•	•	2320	380	400	174	Mobile	PMR-06/4	PM-04/8	MC-05/8	
H088000364	PM-2009/160W-S-CCX/4	6400		•		•	•	•	•	•	•	•	•	2320	380	400	174	Stationary	PMR-07/4	PMC-07		

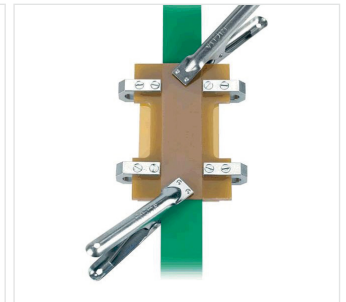
Details			Power supply				Product type				Method			Dimensions				Press details			
Max belt width	Ordering code	P/N	Power [W]	Conveyor belts				Flexproof	Quickmelt	Thermofix	Length [mm]	Width [mm]	Height [mm]	Weight [kg]	Kit version	Control unit	Cooling unit	Press accessories			
				1 x 120 V	1 x 230 V	3 x 230 V	3 x 400 V												Habasit Cleandrive™	Power transmission	Machine tapes
<b>PM-04 wide belts, multipurpose</b>																					
2400	H080691141	PM-2404/160W-S-AAX/4	10800		•	•	•	•	•	2950	380	565	450	Stationary	PMR-06/4	PMC-06					
	H080691142	PM-2404/160W-S-AAX/5	10800		•	•	•	•	•	2950	380	565	450	Stationary	PMR-06/5	PMC-06					
	H080691143	PM-2404/160W-M-APM/4	10800		•	•	•	•	•	2950	380	565	450	Mobile	PMR-06/4	PM-04/8	MC-05/8				
	H080691144	PM-2404/160W-M-APM/5	10800		•	•	•	•	•	2950	380	565	450	Mobile	PMR-06/5	PM-04/8	MC-05/8				
3200	H080691154	PM-3204/160W-M-APM/5	8920		•	•	•	•	•	3655	380	665	620	Mobile	PMR-06/5	PM-04/8	MC-05/8				
	H080691151	PM-3204/160W-S-AAX/4	8920		•	•	•	•	•	3655	380	665	620	Stationary	PMR-06/4	PMC-06					
	H080691152	PM-3204/160W-S-AAX/5	8920		•	•	•	•	•	3655	380	665	620	Stationary	PMR-06/5	PMC-06					
	H080691153	PM-3204/160W-M-APM/4	8920		•	•	•	•	•	3655	380	665	620	Mobile	PMR-06/4	PM-04/8	MC-05/8				
3600	H080691157	PM-3604/160W-S-AAX/5	10180		•	•	•	•	•	4135	380	665	726	Stationary	PMR-06/5	PMC-06					
	H080691158	PM-3604/160W-M-APM/4	10180		•	•	•	•	•	4135	380	665	726	Mobile	PMR-06/4	PM-04/8	MC-05/8				
	H080691159	PM-3604/160W-M-APM/5	10180		•	•	•	•	•	4135	380	665	726	Mobile	PMR-06/5	PM-04/8	MC-05/8				
	H080691156	PM-3604/160W-S-AAX/4	10180		•	•	•	•	•	4135	380	665	726	Stationary	PMR-06/4	PMC-06					
4200	H080691161	PM-4204/160W-S-AAX/4	11600		•	•	•	•	•	4660	380	665	860	Stationary	PMR-06/4	PMC-06					
	H080691162	PM-4204/160W-S-AAX/5	11600		•	•	•	•	•	4660	380	665	860	Stationary	PMR-06/5	PMC-06					
	H080691163	PM-4204/160W-M-APM/4	11600		•	•	•	•	•	4660	380	665	860	Mobile	PMR-06/4	PM-04/8	MC-05/8				
	H080691164	PM-4204/160W-M-APM/5	11600		•	•	•	•	•	4660	380	665	860	Mobile	PMR-06/5	PM-04/8	MC-05/8				
<b>PM-HD high duty</b>																					
1200	H088000503	PM-1201/200W-M-CXX/5	5720		•	•	•	•	•	1550	420	360	173	Mobile	PMR-07/5						
2200	H088000504	PM-2201/200W-M-CXX/5	10080		•	•	•	•	•	2750	450	560	410	Mobile	PMR-07/5						

When using hot-pressing tools, in order to properly position the belt ends and obtain a perfect joining result, specific guide rails have been designed for our PQ-59, PF-62 and PF-100S devices.

A large choice of fixed-width guide rails is available, and if you are looking for high flexibility (or minimal on site setup) adjustable versions are also available.



Fixed width



Adjustable width

	Guide rails for PQ-59	Guide rails for PF-100	Guide rails for PF-62
			
Width [mm]	Ordering code		
6	H080672006		
8	H080672008		
10	H080672010		
11	H080672011		
12	H080672012		
13	H080672013		
14	H080672014		
15	H080672015		
16	H080672016		
18	H080672018		H080672214
20	H080672020		H080672209
22	H080672022		
25	H080672025		
30	H080672030		H080672215
35	H080672035		
40	H080672040		H080672212
42		H080672226	
50	H080672050		
55		H080672225	
60		H080672224	H080672213
75		H080672223	
80		H080672222	
90		H080672221	
100		H080672220	
*	H080672201		H080672210
Width [inch]	Ordering code		
1 1/2"			H080672106
**			H080672211

\* 25, 30, 35, 38, 40, 45, 50, 60

\*\* 1", 1 1/4", 1 3/8", 1 1/2", 1 5/8", 1 3/4", 2" 2 1/4"

When HabaSYNC® timing belts need to be joined, Habasit joining plates provide outstanding results and smooth pulley engagement. Thanks to a special micro-coating, Habasit joining plates have excellent anti-sticking properties. A huge variety of pitch-width alternatives is available to cover every situation, including both metric and imperial standard pitches.

Metric pitch						
Width [mm]	Ordering code	Product name	Ordering code	Product name	Ordering code	Product name
	T5		T10		T20	
10	H088000105	CJ-T5-10-03				
16	H088000002	CJ-T5-16-03	H088000010	CJ-T10-16-03	H088000018	CJ-T20-16-03
25	H088000003	CJ-T5-25-03	H088000011	CJ-T10-25-03	H088000019	CJ-T20-25-03
32	H088000004	CJ-T5-32-03	H088000012	CJ-T10-32-03	H088000020	CJ-T20-32-03
50	H088000005	CJ-T5-50-03	H088000013	CJ-T10-50-03	H088000021	CJ-T20-50-03
75	H088000006	CJ-T5-75-03	H088000014	CJ-T10-75-03	H088000022	CJ-T20-75-03
100	H088000007	CJ-T5-100-03	H088000015	CJ-T10-100-03	H088000023	CJ-T20-100-03
125	H088000008	CJ-T5-125-03	H088000016	CJ-T10-125-03	H088000024	CJ-T20-125-03
150	H088000009	CJ-T5-150-03	H088000017	CJ-T10-150-03	H088000025	CJ-T20-150-03

Metric pitch						
Width [mm]	Ordering code	Product name	Ordering code	Product name	Ordering code	Product name
	AT5		AT10		AT20	
16	H088000026	CJ-AT5-16-03	H088000034	CJ-AT10-16-03	H088000042	CJ-AT20-16-03
25	H088000027	CJ-AT5-25-03	H088000035	CJ-AT10-25-03	H088000043	CJ-AT20-25-03
32	H088000028	CJ-AT5-32-03	H088000036	CJ-AT10-32-03	H088000044	CJ-AT20-32-03
50	H088000029	CJ-AT5-50-03	H088000037	CJ-AT10-50-03	H088000045	CJ-AT20-50-03
75	H088000030	CJ-AT5-75-03	H088000038	CJ-AT10-75-03	H088000046	CJ-AT20-75-03
100	H088000031	CJ-AT5-100-03	H088000039	CJ-AT10-100-03	H088000047	CJ-AT20-100-03
125	H088000032	CJ-AT5-125-03	H088000040	CJ-AT10-125-03	H088000048	CJ-AT20-125-03
150	H088000033	CJ-AT5-150-03	H088000041	CJ-AT10-150-03	H088000049	CJ-AT20-150-03

Metric pitch								
Width [mm]	Ordering code	Product name	Ordering code	Product name	Ordering code	Product name	Ordering code	Product name
	5M		8M		14M		RPP8	
10	H088000124	CJ-HTD5-10-03	H088000084	CJ-HTD8-10-03	H088000094	CJ-HTD14-10-03		
15	H088000125	CJ-HTD5-15-03	H088000085	CJ-HTD8-15-03	H088000095	CJ-HTD14-15-03		
20	H088000174	CJ-HTD5-20-03	H088000086	CJ-HTD8-20-03	H088000096	CJ-HTD14-20-03	H08D010067	CJ-RPP8-20-03
25	H088000126	CJ-HTD5-25-03	H088000087	CJ-HTD8-25-03	H088000097	CJ-HTD14-25-03		
30	H088000175	CJ-HTD5-30-03	H088000088	CJ-HTD8-30-03	H088000098	CJ-HTD14-30-03		
40	H088000176	CJ-HTD5-40-03	H088000089	CJ-HTD8-40-03	H088000099	CJ-HTD14-40-03		
50	H088000127	CJ-HTD5-50-03	H088000090	CJ-HTD8-50-03	H088000100	CJ-HTD14-50-03	H08D010065	CJ-RPP8-50-03
55					H088000122	CJ-HTD14-55-03		
85			H088000091	CJ-HTD8-85-03	H088000101	CJ-HTD14-85-03	H08D010063	CJ-RPP8-85-03
100	H088000178	CJ-HTD5-100-03	H088000092	CJ-HTD8-100-03	H088000102	CJ-HTD14-100-03	H08D010061	CJ-RPP8-100-03
115					H088000123	CJ-HTD14-115-03		
150	H088000179	CJ-HTD5-150-03	H088000093	CJ-HTD8-150-03	H088000103	CJ-HTD14-150-03	H08D010059	CJ-RPP8-150-03

Imperial pitch								
Width [inch]	Ordering code	Product name	Ordering code	Product name	Ordering code	Product name	Ordering code	Product name
	XL		L		H		XH	
0.5	H088000107	CJ-XL-050-03	H088000108	CJ-L-050-03	H088000106	CJ-H-050-03		
0.75	H088000074	CJ-XL-075-03	H088000076	CJ-L-075-03	H088000078	CJ-H-075-03	H088000080	CJ-XH-075-03
1	H088000050	CJ-XL-100-03	H088000056	CJ-L-100-03	H088000062	CJ-H-100-03	H088000068	CJ-XH-100-03
1.5	H088000075	CJ-XL-150-03	H088000077	CJ-L-150-03	H088000079	CJ-H-150-03	H088000081	CJ-XH-150-03
2	H088000005	CJ-XL-200-03	H088000057	CJ-L-200-03	H088000063	CJ-H-200-03	H088000069	CJ-XH-200-03
3	H088000052	CJ-XL-300-03	H088000058	CJ-L-300-03	H088000064	CJ-H-300-03	H088000070	CJ-XH-300-03
4	H088000053	CJ-XL-400-03	H088000059	CJ-L-400-03	H088000065	CJ-H-400-03	H088000071	CJ-XH-400-03
5	H088000054	CJ-XL-500-03	H088000060	CJ-L-500-03	H088000066	CJ-H-500-03	H088000072	CJ-XH-500-03
6	H088000055	CJ-XL-600-03	H088000061	CJ-L-600-03	H088000067	CJ-H-600-03	H088000073	CJ-XH-600-03

## Customers first

Your success is our goal. This is why we don't just offer products, we provide solutions. As committed partners to our customers, we are dedicated to sharing our knowledge and delivering full support.

Since our foundation in 1946, Habasit has been finding ways to meet each customer's specific needs in every application. This is what differentiates us as the No. 1 worldwide belting provider in the industry today.



## Comprehensive consulting and technical support

Profit from the best consulting and technical support in the lightweight belting industry. Local experts are always available to assist you with your belting needs. The Habasit team is proud to provide the highest levels of support, together with top-quality products that have led the global market for decades.



## Belt selection and calculation assistance

We are always glad to help you select the most suitable belt for any application. We now also provide the free online tool 'SeleCalc' that makes it easy to make selections and calculations yourself. Simply register online at [selecalc.habasit.com](http://selecalc.habasit.com).



## Fabrication, assembly and local installation services

As a full-service belting provider, we offer joining and assembly services either at our own locations or directly on your equipment.

Habasit has over 30 affiliates worldwide, each with its own inventory, fabrication, assembly and service facilities.



Together with representative offices and numerous qualified distributors, we can react quickly and efficiently to meet all your needs.



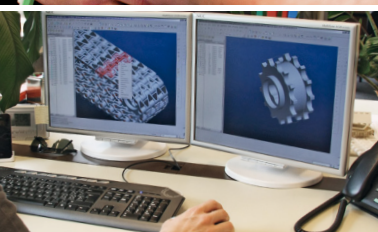
## Customer training programs

To ensure the optimal performance and maximum lifespan of all our products, we offer training programs and various support tools. These include procedures for fabrication, installation, assembly, maintenance and belt repair, all of which take place at a Habasit site or at your location.



## Belt monitoring, inspections, analyses and process optimization proposals

We organize and handle belt maintenance, inspections, analyses and surveys at customer sites. Upon request, we are ready to develop optimization proposals to ensure you're getting maximum value from your machinery and process output.



## Design assistance for customized solutions

Habasit believes in building partnerships with our customers. Our engineering team will work closely with your engineers on joint design developments from initial design to final implementation. This expert service can be invaluable for projects involving new technologies or large-scale modifications and adaptations.





### Committed to innovation

Because our customers' belting challenges and needs are always changing, we consistently invest a substantial amount of labor and resources into the research and development of new products and solutions.

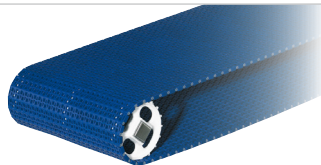
### Certified for quality

We deliver the highest quality standards not only in our products and solutions, but also in our employees' daily work processes. Habasit AG is certified according to ISO 9001:2008.

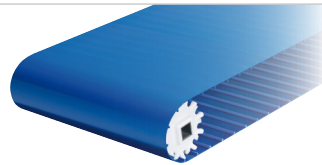


### Worldwide leading product range

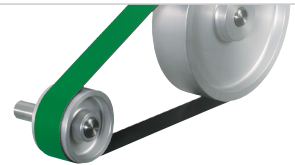
Habasit offers the largest selection of belting, conveying, processing and complementary products in the industry. Our response to any request is never less than a specific, tailor-made solution.



**HabaFLOW®**  
Fabric-based conveyor and processing belts



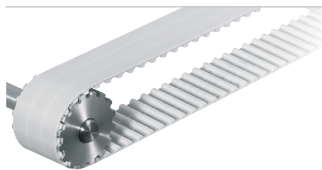
**HabasitLINK®**  
Plastic modular belts



**Habasit Cleandrive™**  
Monolithic reinforced conveyor belts



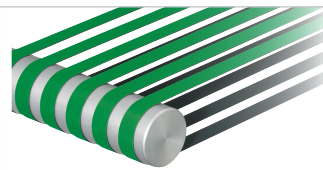
**HabaDRIVE®**  
Power transmission belts



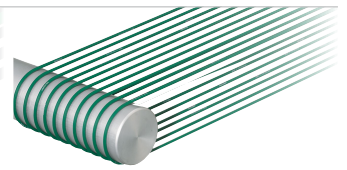
**HabaSYNC®**  
Timing belts



**HabaCHAIN®**  
Chains (slat and conveyor chains)



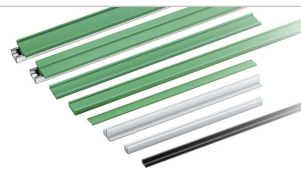
Machine tapes



Round belts



Seamless belts



**HabiPLAST®**  
Profiles, Guides, Wear strips



**Accessories**  
(sprockets, flights, welding profiles, etc.)



**Fabrication tools**  
(joining, cutting & preparing devices)

## EMEA

### Germany

Habasit GmbH, Eppertshausen  
Phone: +49 6071 969 0  
www.habasit.de

### Switzerland

Habasit GmbH, Reinach  
Phone: +41 61 577 51 00  
www.habasit.ch

### Austria

Habasit GmbH, Vienna  
Phone: +43 1 690 66  
www.habasit.at

### Italy

Habasit Italiana SpA  
Customer Care: 199 199 333  
For int. calls: +39 0438 911444  
www.habasit.it

### France

Habasit France S.A.S., Mulhouse  
Phone: +33 389 338 903  
www.habasit.fr

### Spain

Habasit Hispánica S.A.  
Barberá del Vallés  
Phone: +34 937 191 912  
www.habasit.es

### United Kingdom & Ireland

Habasit UK Ltd., Elland  
Phone: +44 333 207 6570  
www.habasit.co.uk

### Netherlands

Habasit Netherlands BV, Nijkerk  
Phone: +31 332 472 030  
www.habasit.nl

## Belgium & Luxembourg

Habasit Belgium N.V., Zaventem  
Phone: +32 27 250 430  
www.habasit.be | habasit.lu

## Turkey

Habasit Kayis San.  
Ve Tic. Ltd. Sti., Istanbul  
Phone: +90 444 70 43  
www.habasit.com.tr

## Nordic countries

Habasit AB, Hindås, Sweden  
Phone: +46 301 226 00  
www.habasit.se

## Poland

Habasit Polska Sp. z o.o.  
Dąbrowa Górnicza  
Phone: +48 32 639 02 40  
www.habasit.pl

## Russia

OOO Habasit Ltd.  
Moscow Region  
Phone: +7 495 966 1566  
www.habasit.ru

## Ukraine

Habasit Ukraine LLC., Vinnytsa  
Phone: +38 044 290 88 99  
www.habasit.ua

## South Africa

Habasit South Africa Pty Ltd.  
Gauteng  
Phone: +27 10 001 6770  
www.habasit.co.za

## APAC

### Japan

Habasit Nippon Co., Ltd.  
Yokohama  
Phone: +81 45 476 0371  
www.habasit.co.jp

### China

Habasit East Asia Ltd.  
Fotan, Shatin, N.T., Hong Kong  
Phone: +852 2145 0150  
www.habasit.com.hk

Habasit (Shanghai) Co. Ltd.

Shanghai  
Phone: +8621 5488 1218  
www.habasit.com.cn

### Taiwan

Habasit (Taiwan) Ltd.  
New Taipei City  
Phone: +886 2 2267 0538  
www.habasit.com.tw

### India

Habasit India, Coimbatore  
Phone: +91 422 262 78 79  
www.habasit.in

### Singapore

Habasit Far East Pte Ltd.  
Singapore  
Phone: +65 6862 5566  
www.habasit.com.sg

### Australia

Habasit Australia Pty Ltd.  
Silverwater, Sydney  
Phone: +61 1300 945 455  
www.habasit.com.au

## New Zealand

Habasit New Zealand Pty Ltd.  
Auckland  
Phone: 0800 000 070  
www.habasit.co.nz

## AMERICAS

### USA

Habasit America  
Suwanee, Georgia  
Phone: +1 800 458 6431  
www.habasitamerica.com

### Canada

Habasit Canada Ltd., Oakville  
Phone: +1 905 827 41 31  
www.habasit.ca

### Mexico

Habasit Rocua, Zapopan  
Phone: +52 33 3824 2358  
www.habasitrocua.mx

### Brazil

Habasit do Brasil, Barueri - SP  
Phone: +55 11 4789 9022  
www.habasit.com.br

## Habasit AG

Römerstrasse 1  
CH-4153 Reinach, Switzerland  
Phone +41 61 715 15 15  
Fax +41 61 715 15 55  
E-mail info@habasit.com  
www.habasit.com

Registered trademarks  
Copyright Habasit AG  
Subject to alterations  
Printed in Poland  
4005BRO.TOL-en1117ITA